

Measuring sub-units for blocks as you go along

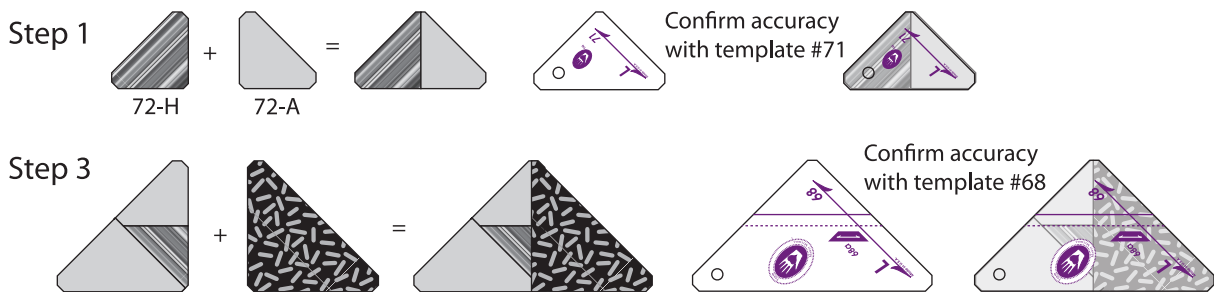
All of the 12" blocks made with Set L are based on a 7 by 7 grid. Right off, you know 12 divided by 7 is not easily measured. That is why you will love the size-specific acrylic templates.

If you like to measure sub-units as you progress in making the blocks, we recommend that you start by learning to use larger templates to confirm the size of pieced units.

The example shown below is from the Astoria block. In Step 1, 72+72 is the same size as template #71. In step 3, the completed unit should be exactly the same size as #68-F to which it will be sewn, and the unit completed in step 4 should be exactly the size of #67 (3.9284") square.

These Patchwork Party block instructions do not list sizes of sub-units because the numbers look scary. You don't need to worry about the numbers when you cut with Set L templates, but here is a list of the dimensions, including seam allowances. (The numbers in parentheses are the mathematically correct sizes.)

- 1 units = almost 2¼" (2.214")
- 2 units = almost 4" (3.928")
- 3 units = just over 5⅝" (5.642")
- 4 units = almost 7⅜" (7.356")
- 5 units = just over 9" (9.07")
- 6 units = just over 10¾" (10.784")
- 7 units = 12½", including seam allowances



Thanks for coming to the Patchwork Party.



www.frommarti.com